

# IT Sustainability framework

## 1 Background

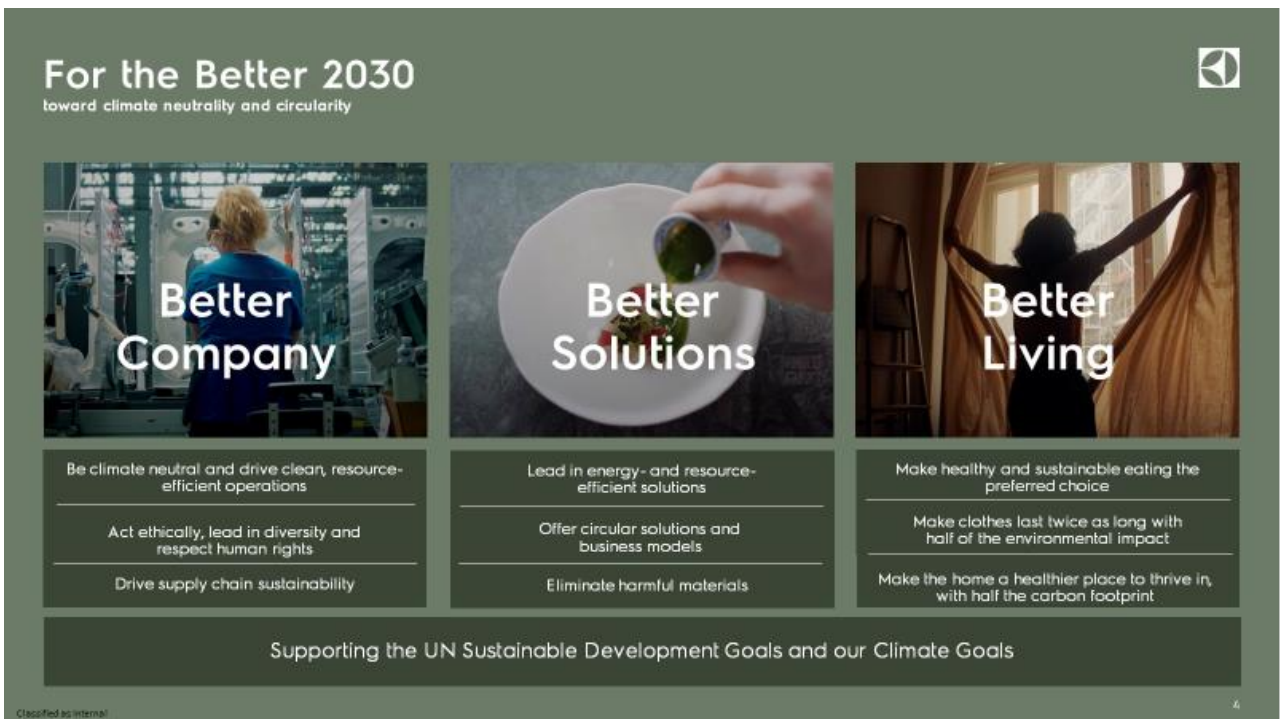
At Electrolux, we are committed to acting sustainably. Sustainability is a top priority, and we are proud to be recognized as a leader within our industry. Our company goal is to make our business circular and climate neutral by 2030. To succeed, we are continuously rethinking and improving our ways of working – internally, and together with our customers, partners, and suppliers. We will select suppliers that are best in class when it comes to sustainability. We believe that by working together and collaborating around sustainability we can make a change for the better.

Electrolux is committed to being a responsible employer and a good corporate citizen, with products and solutions that contribute to improving people's lives around the world. All our activities – including sourcing, manufacturing, distribution, and sale of products – must be conducted with respect and consideration for human rights, human safety and health, and the environment. We strive for continuous improvement with sustainability as a core focus in all our operations and activities in which we are involved.

### 1.1 Climate Goals

Electrolux is committed to reducing its greenhouse gas emissions from operations by 80% and its emissions from products by 25% by 2025 (base year 2015) in support of the Paris climate agreement. These goals are approved by the Science Based Targets initiative.

Our sustainability framework, For the Better, consists of three pillars:



It defines how Electrolux works to achieve: 1. Better Company, 2. Better Solutions and 3. Better Living. It helps us and our suppliers to strive toward our purpose – **Shape living for the better.**

## 1.2 Expectations on IT Suppliers

The following chart summarizes our sustainability work and the expectations on our IT suppliers. We will evaluate our IT suppliers from a sustainability perspective, both during the RFP phase and during the life term of the contract and expect our suppliers to comply with our expectations.

Pillars	Electrolux sustainability goals relevant for IT suppliers	Expectations on IT suppliers
Better Company	<p><b>Be climate neutral and drive clean and resource-efficient operations</b></p> <p>Electrolux will continue to reduce its environmental footprint by shifting to renewables and optimizing the use of energy and other resources throughout its operations. We aim to have climate neutral operations by 2030.</p>	<p>We expect that your operations and/or services delivered to us are energy- and resource-efficient and that you strive to make a shift toward renewables.</p>
	<p><b>Act ethically, lead in diversity and respect human rights</b></p> <p>We will earn the trust of everyone impacted by our operations, demonstrating our commitment to ethics, diversity and human rights through our words and actions. This includes working to ensure the health and safety of our employees and promoting societal benefit through community investment activities.</p>	<p>You are required to comply with the Electrolux Supplier Workplace Standard available at <a href="https://www.electroluxgroup.com/en/workplace-policy-and-supplier-workplace-standard-562/">https://www.electroluxgroup.com/en/workplace-policy-and-supplier-workplace-standard-562/</a></p> <p>and the Electrolux Workplace Directive at <a href="https://www.electroluxgroup.com/en/workplace-directive-8839/">https://www.electroluxgroup.com/en/workplace-directive-8839/</a></p>
	<p><b>Drive supply chain sustainability</b></p> <p>Electrolux will take its sustainability leadership agenda into the supply chain. We will work with suppliers so they can live up to our high expectations, no matter where they are located, and we will drive and support the transition to more sustainable practices.</p>	<p>We expect you to monitor the climate impact of your supply chain, and work to shift to more sustainable transportation modes such as ocean and rail.</p> <p>CDP is a not-for-profit charity that runs the global disclosure system for investors, companies, cities, states and regions to manage their environmental impacts. Electrolux is disclosing its CO2 emission according to CDP. If requested by Electrolux, supplier shall make a disclosure in accordance with CDP.</p> <p>We expect that the services supplied to Electrolux does not directly or indirectly contribute to human right abuses in conflict-affected and high-risk areas. If requested by Electrolux, you are required to provide information about sourcing of conflict minerals to show how you fulfill your obligations in this area.</p> <p>It is your responsibility as supplier to ensure that your subcontractors and other third-party suppliers comply with these requirements.</p>
Better Solutions	<p><b>Lead in energy and resource-efficient solutions</b></p> <p>Electrolux will continuously improve the energy and water performance of our appliances, raising the bar for product efficiency around the world.</p>	<p>Suppliers will be selected based upon the energy and resource efficiency of the products and services provided to us, and this will be monitored.</p> <p>We require relevant specifications and reports to monitor our IT environmental footprint on a quarterly basis. See example in 2.1.</p>
	<p><b>Offer circular products and business solutions</b></p> <p>We will contribute to the circular economy by integrating recycled materials into our product platforms, promoting recyclability, using more sustainable packaging solutions, increasing the availability of spare parts to repair our products, and developing circular business solutions.</p>	<p>We expect you to contribute to the circular economy by making optimal use of resources, use more recycled materials and promote recyclability.</p> <p>We expect you to give a second life or good end-of-life treatment to the IT equipment you use in delivering the services to Electrolux to avoid e-waste.</p>

## 2 IT Sustainability Reporting Requirements for Cloud and Hosting Services provided to Electrolux

We are reducing our footprint by running efficient operations all around the world. We continue to reduce our environmental footprint by optimizing the use of energy and other resources throughout our operations and shifting to renewables.

For any supplier of cloud or hosting services (including co-location) from own or a third-party hosting infrastructure. The following measurements shall be provided to Electrolux on a **quarterly basis** or on the agreed time horizon if different.

\*Please provide details for 2CS& 3CS or 4CS below

Ref	Measurement	Description	Unit
1 CS	Power usage effectiveness (PUE)	$\text{PUE} = \frac{\text{Total facility power or energy}}{\text{IT equipment power or energy}}$ as an annual average of latest year  Please include future improvement targets if exists.	e.g., 1.52
2 CS	Measured, calculated or estimated energy consumption for the Electrolux service	Electrolux service share of the data center's energy consumption in kWh per reporting period.  A description on how this is measured, calculated or estimated must be included.	kWh
3 CS	Average emission factor for electricity  (Provided by the Electricity provider)	Average emission factor in kg CO <sub>2</sub> per kWh used electricity  Include: Reference of the source of the factor	kg CO <sub>2</sub> per kWh
*4 CS mandatory if no data provided for 2 CS and 3 CS	Measured, calculated or estimated CO <sub>2</sub> consumption for the Electrolux service	Electrolux service share of the data center's CO <sub>2</sub> emission consumption in Ton CO <sub>2</sub> per reporting period.  A description on how this is measured, calculated or estimated must be included.	Ton CO <sub>2</sub>
5 CS	Renewable energy %  (according to RE100 criteria)	$\text{Renewable energy \%} = \frac{\text{Total renewable energy}}{\text{Total Energy}}$ on energy bill for the data center  The source of any non-renewable energy.	e.g., 5%
6 CS	Carbon offsetting  (Through REC, GOO, I-REC or project based)	Details of carbon offsetting made for the specific service	% by total electricity and energy used by Electrolux
7 CS	Location of data center	City and / or country of the service	e.g., Dublin, Ireland

## 2.1 Report routines

The reports shall be submitted to [ITSustainability@electrolux.com](mailto:ITSustainability@electrolux.com). The report shall be submitted before the 10<sup>th</sup> working day in the first month after the respective calendar quarter.

Below is a fictive example of the type of report to Electrolux:

Name of Service	Year	Quarter	PUE (Ref 1CS)	Electrolux Share (Ref 2CS)	Average emission factor for electricity (Ref 3 CS)	CO2 emission (Ref 4 CS)	Renewable Electricity (Ref 5CS)	Carbon Offset (Ref 6CS)	Location of data center (Ref 7CS)	Comments
Application /Service name	2021	Q1	1.52	1000 kWh	0.550	1 Ton	5%	50%	Dublin, Ireland	

For the areas defined, the optimal situation is:

- PUE: To have a PUE as low as possible close to 1.
- Renewable electricity 100% is optimal.